



**TITAN AIRWAYS**

**9GAWC21D29**

**AIRBUS A321-NEO**

Parts included in this package:

FU	Fuselage	Page 2
WB	Wing Box	Page 2
TV	Vertical Stabilizer	Page 2
EC	Engine Cowlings	Page 2
WG2	Wing, Underside, Port	Page 3
WG3	Wing, Underside, Starboard	Page 3
WG1	Wing, Upper	Page 3
WF	Wing Fairings	Page 3
EI	Engine Interiors	Page 3
MG	Main Landing Gear	Page 3
NG	Nose Landing Gear	Page 3
TH	Horizontal Stabilizer	Page 3

For best results, we recommend that this package be printed on the following paper stocks:

Pages 2-3    Model                      Glossy 80lbs

This is a genuine, official Airigami design. This design is provided free-of-charge - you should never, ever pay for this design. However, we strongly urge you to consider donating to Airigami at [www.papieravion.org](http://www.papieravion.org). Airigami was established so that the joy of airline modeling can be available to everybody. Please consider making a donation of \$5, \$20, \$50 or whatever you can to help keep Airigami alive and, best of all, free.

**INSTRUCTIONS**

For instructions on how to build this model, refer to manual

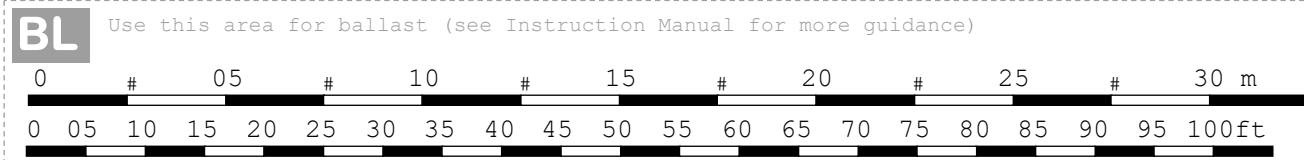
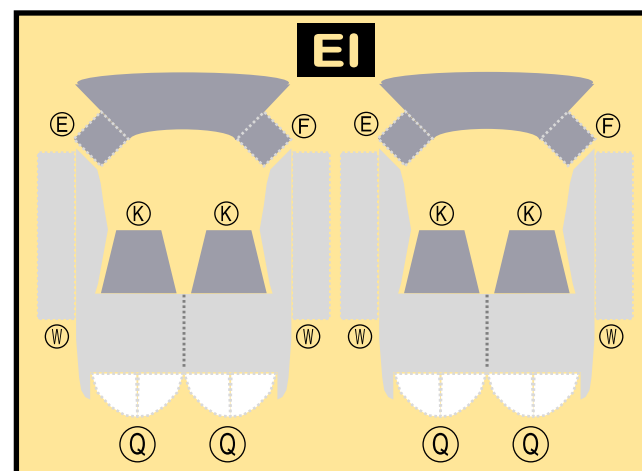
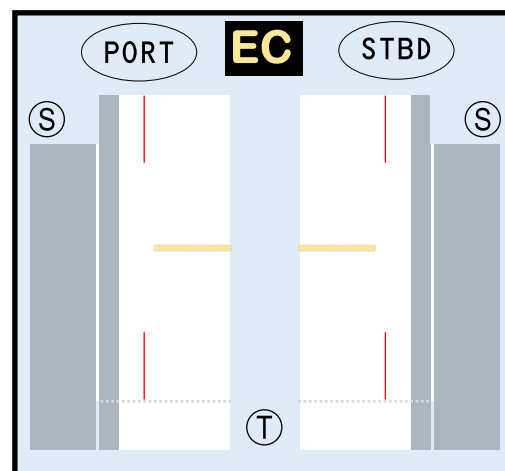
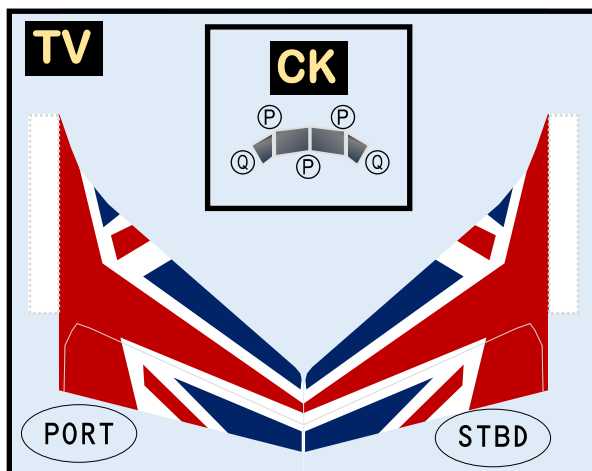
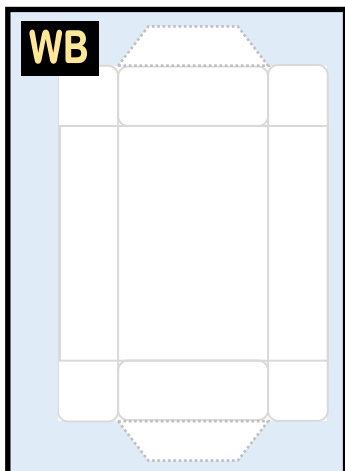
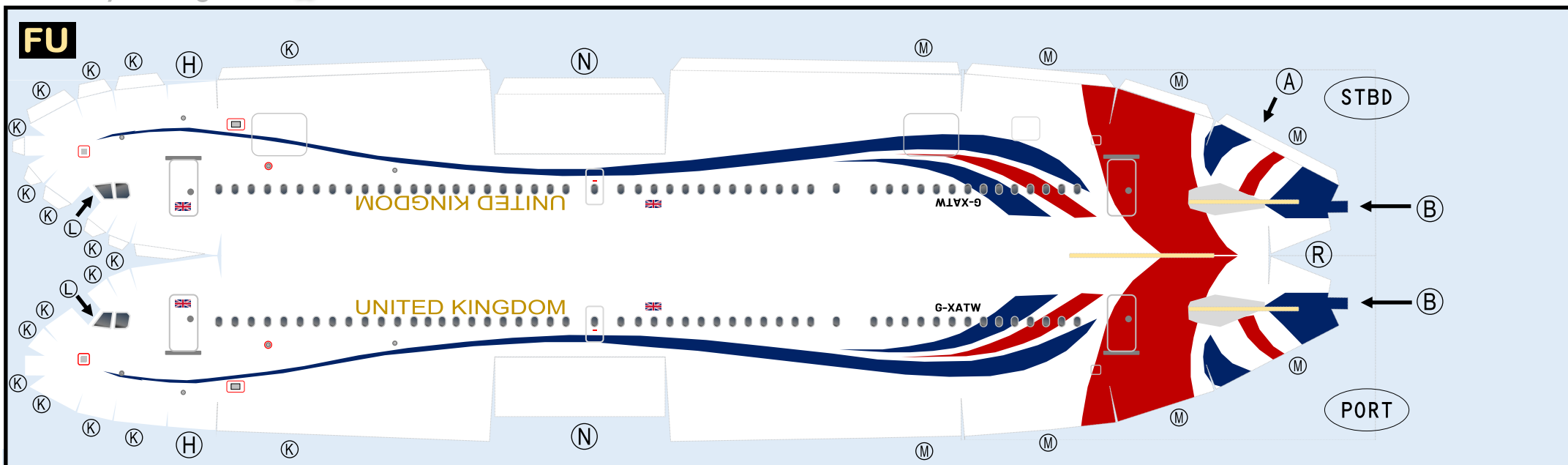
**INSTRUCTIONS 1A**



**AIRBUS A321-NEO / TITAN AIRWAYS**

**9GAWC21D29**

Paper-based scale model design system Copyright © 2019 – Airigami / Airline designs and logos are reproduced for Fair Use educational and informational purposes. USE OF THIS TEMPLATE FOR FINANCIAL GAIN IS PROHIBITED.



# AIRBUS A321-NEO / TITAN AIRWAYS

9GAWC21D29

Paper-based scale model design system Copyright © 2019 – Airigami / Airline designs and logos are reproduced for Fair Use educational and informational purposes. USE OF THIS TEMPLATE FOR FINANCIAL GAIN IS PROHIBITED.

